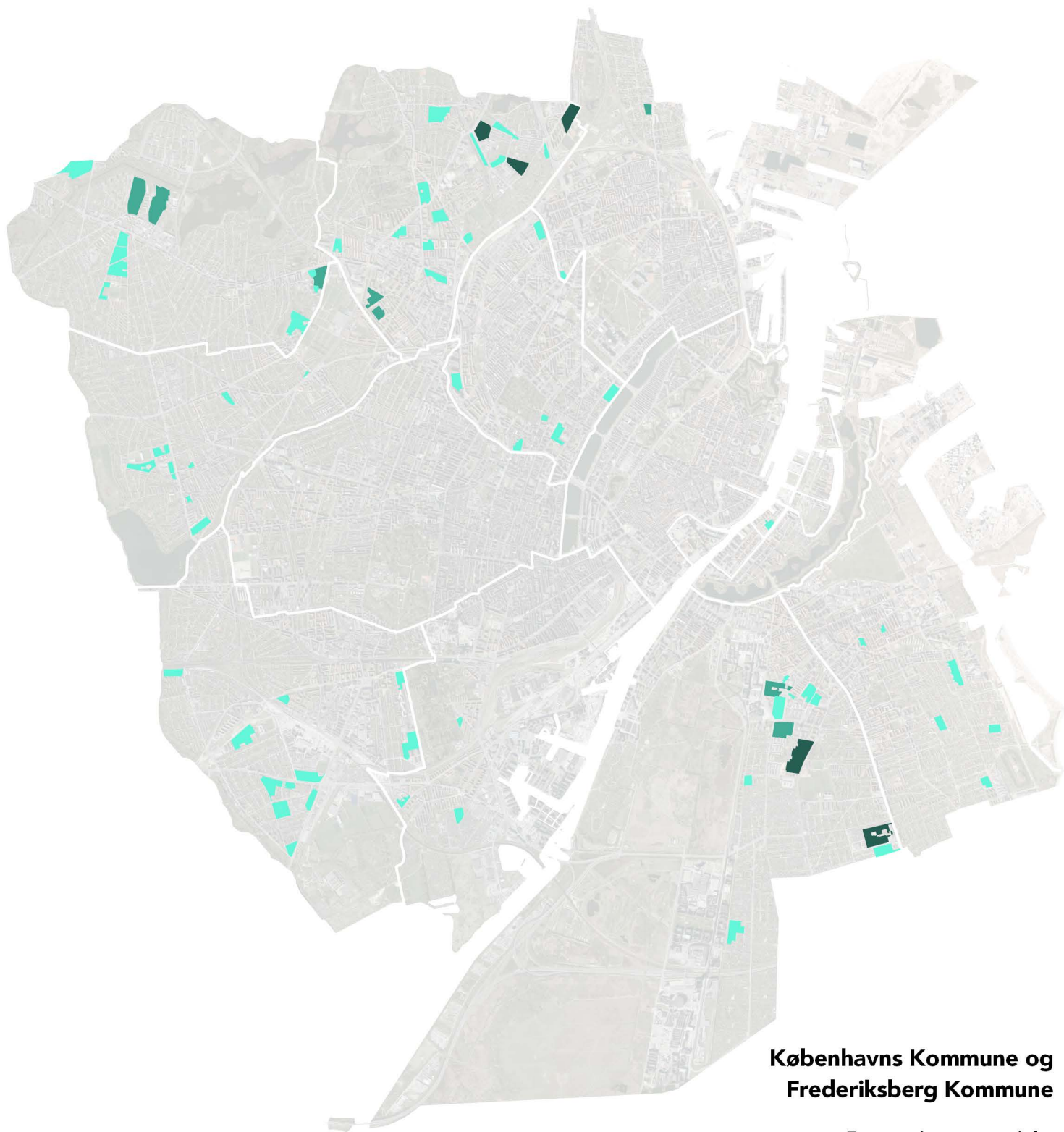


5.1.1. Københavns Kommune INFILL



Københavns Kommune og Frederiksberg Kommune

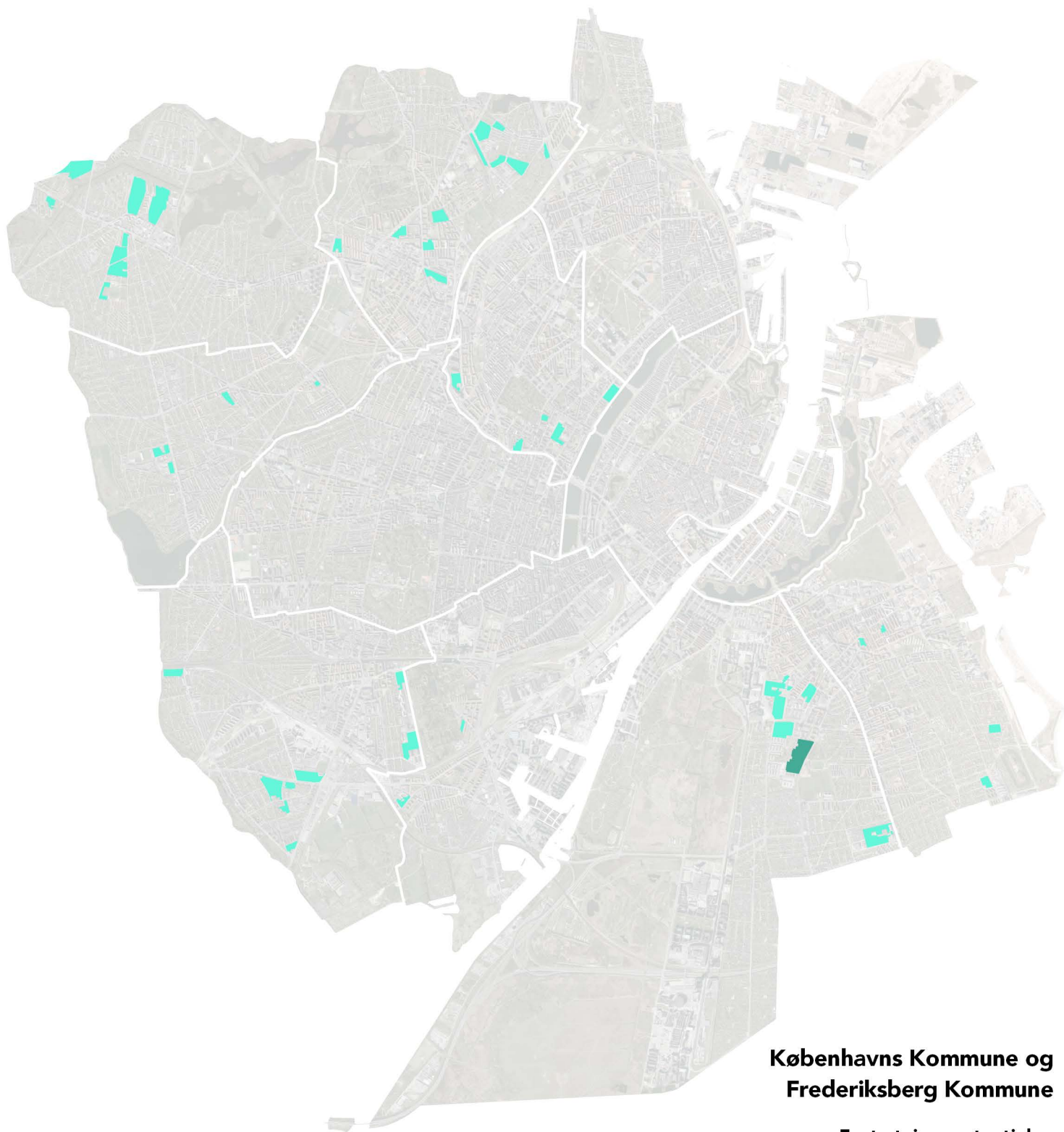
Fortætningspotentiale

600 - 6.000 kvm

6.000 - 12.000 kvm

12.000 - 18.000 kvm

5.1.2. Københavns Kommune ONFILL




Københavns Kommune og Frederiksberg Kommune

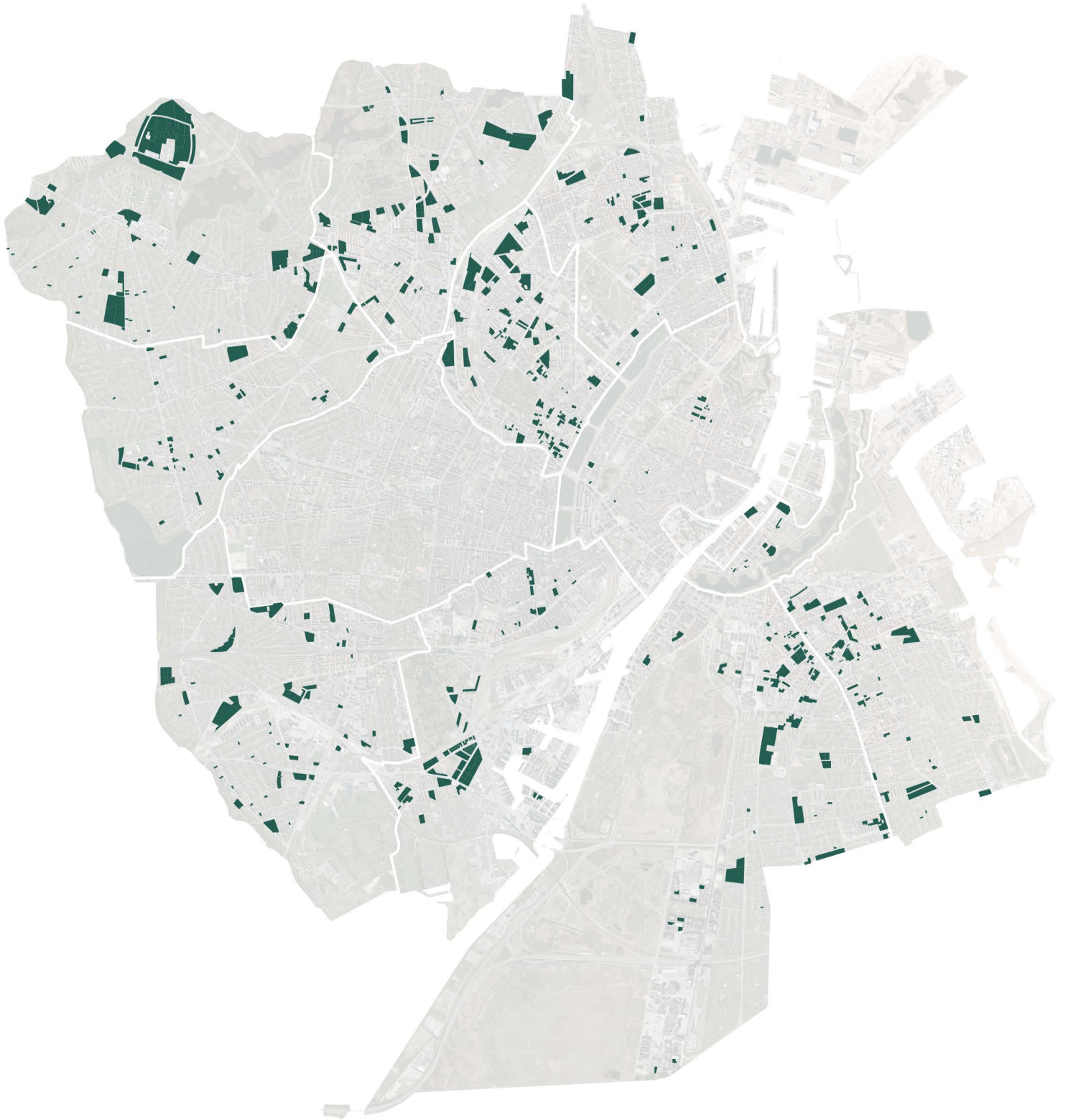
Fortætningspotentiale

600 - 6.000 kvm 

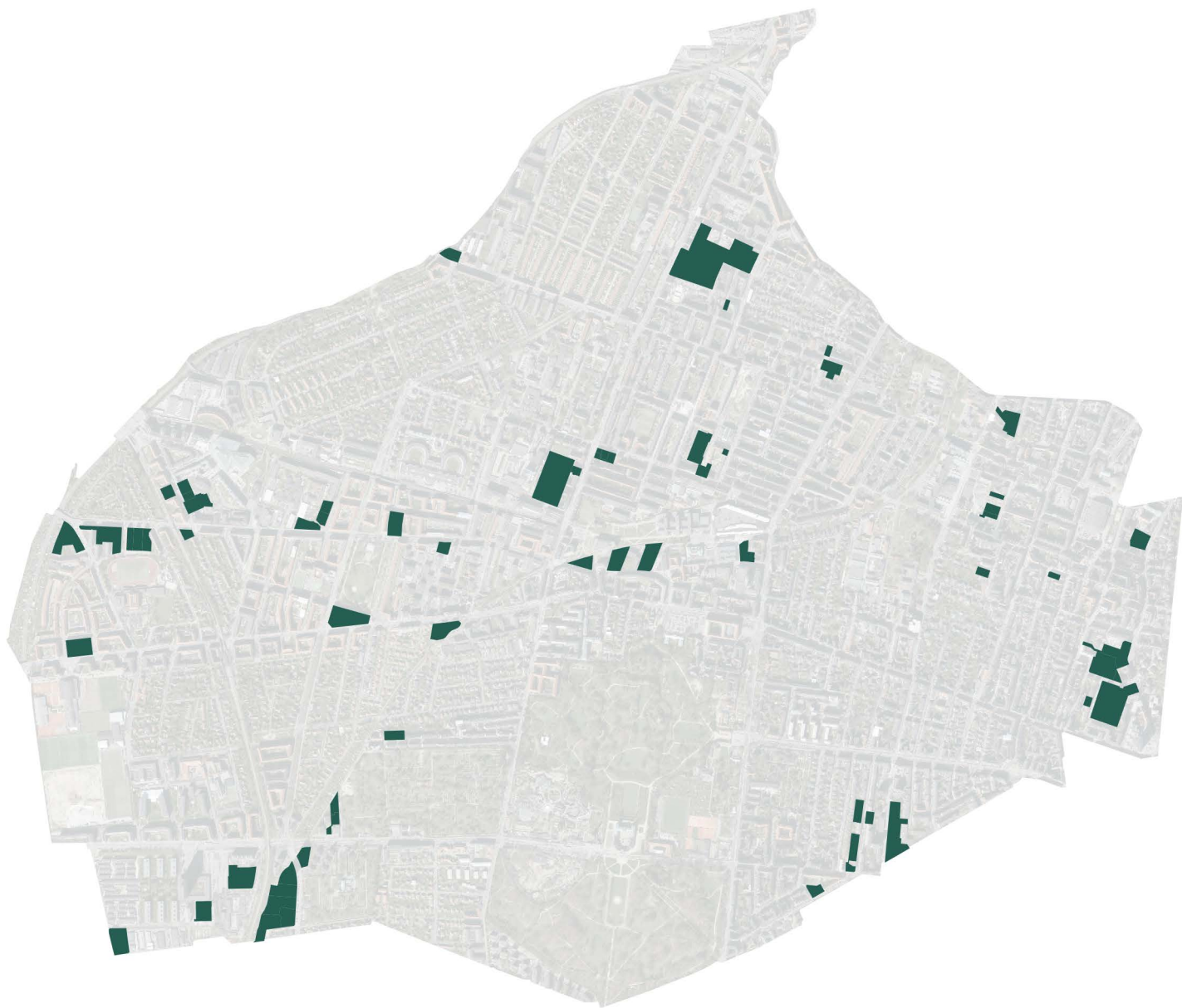
6.000 - 12.000 kvm 

12.000 - 18.000 kvm 

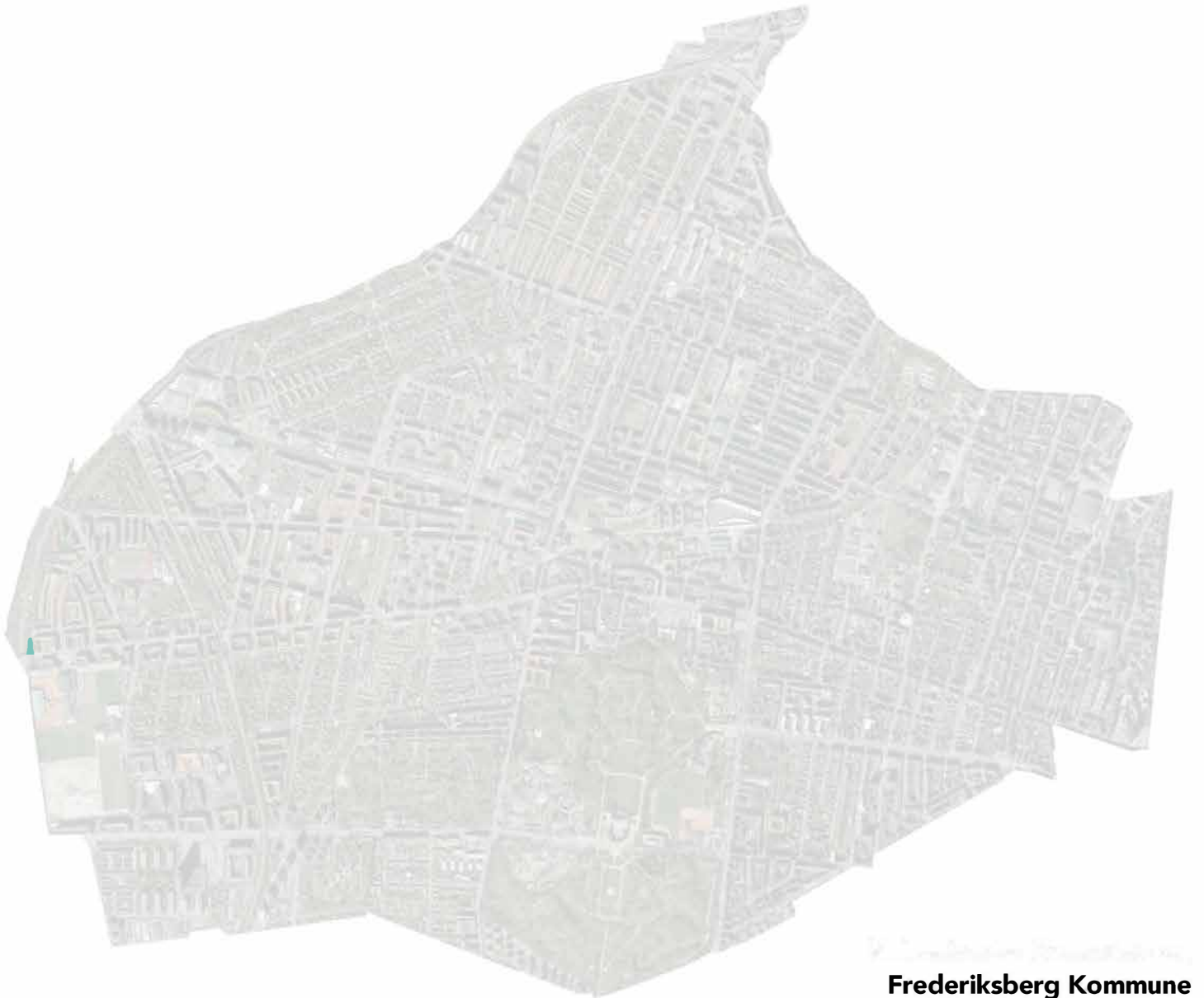
5.1.3. Københavns Kommune FRAVALGT



5.2.1. Frederiksberg Kommune FRAVALGT



5.2.2. Frederiksberg Kommune INFILL



Frederiksberg Kommune

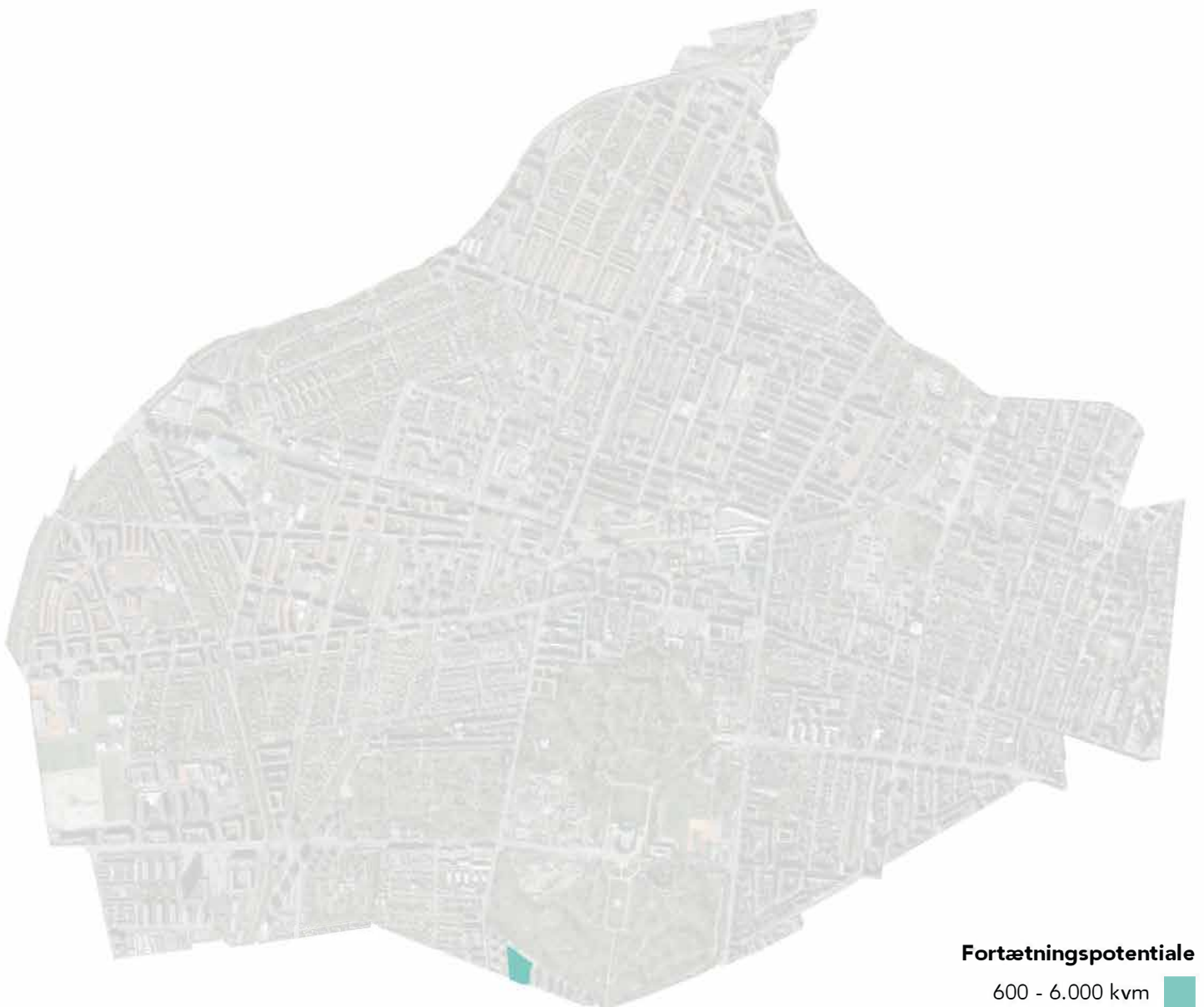
Fortætningspotentiale

600 - 6.000 kvm 

6.000 - 12.000 kvm 

12.000 - 18.000 kvm 

5.2.3. Frederiksberg Kommune ONFILL



Fortætningspotentiale

600 - 6.000 kvm

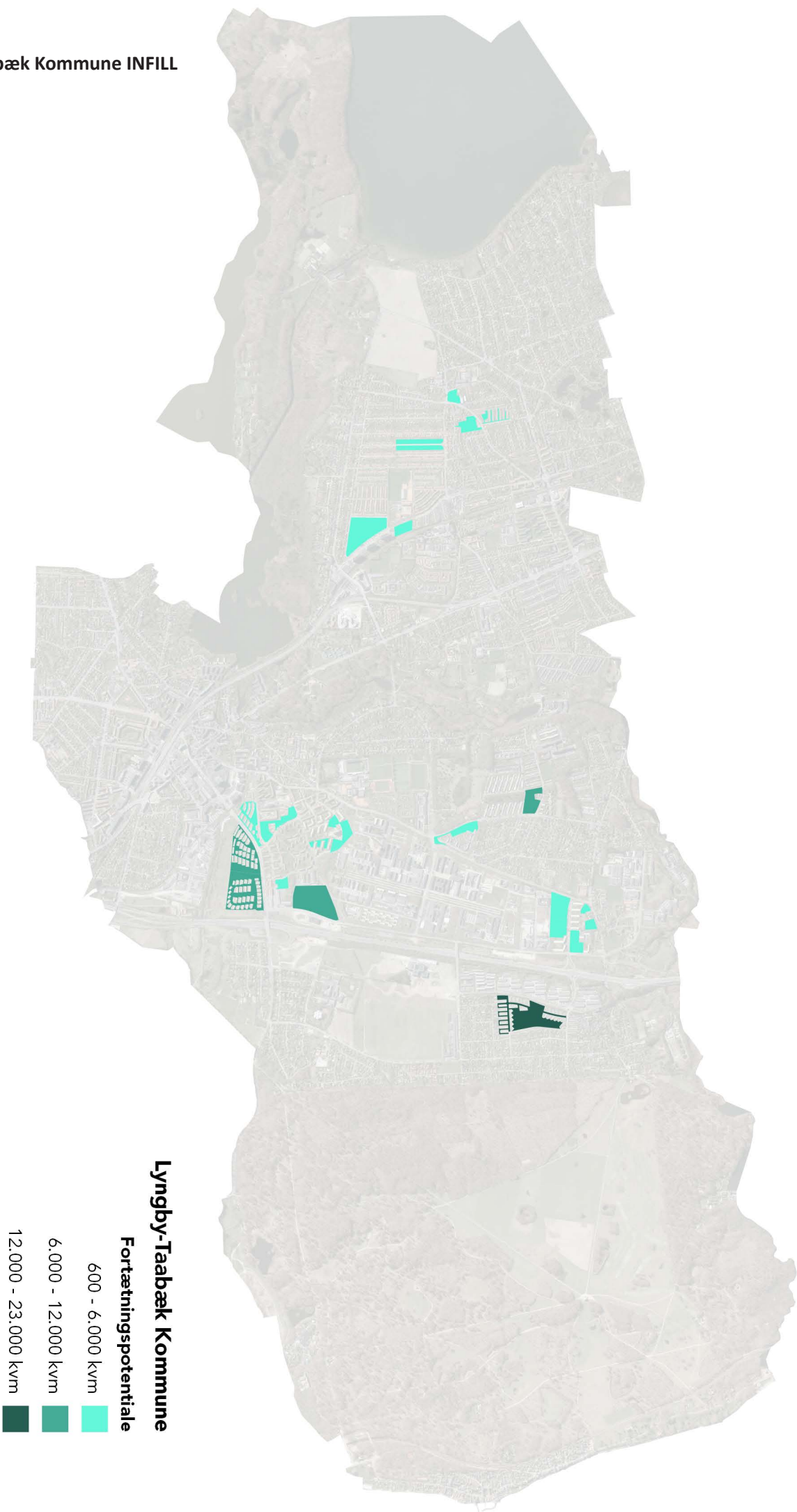
6.000 - 12.000 kvm

12.000 - 18.000 kvm

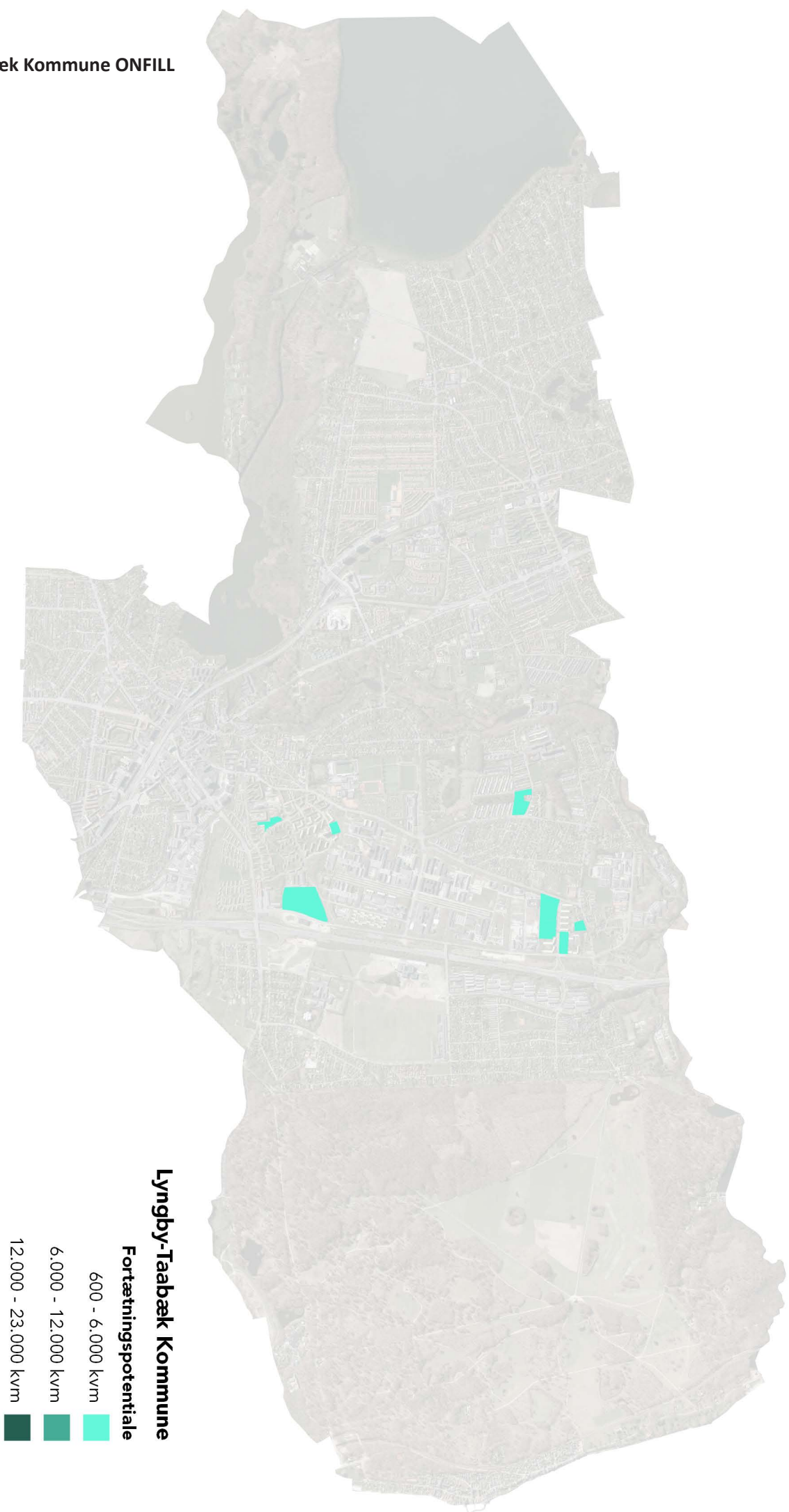
5.3.1. Gentofte Kommune FRAVALGT



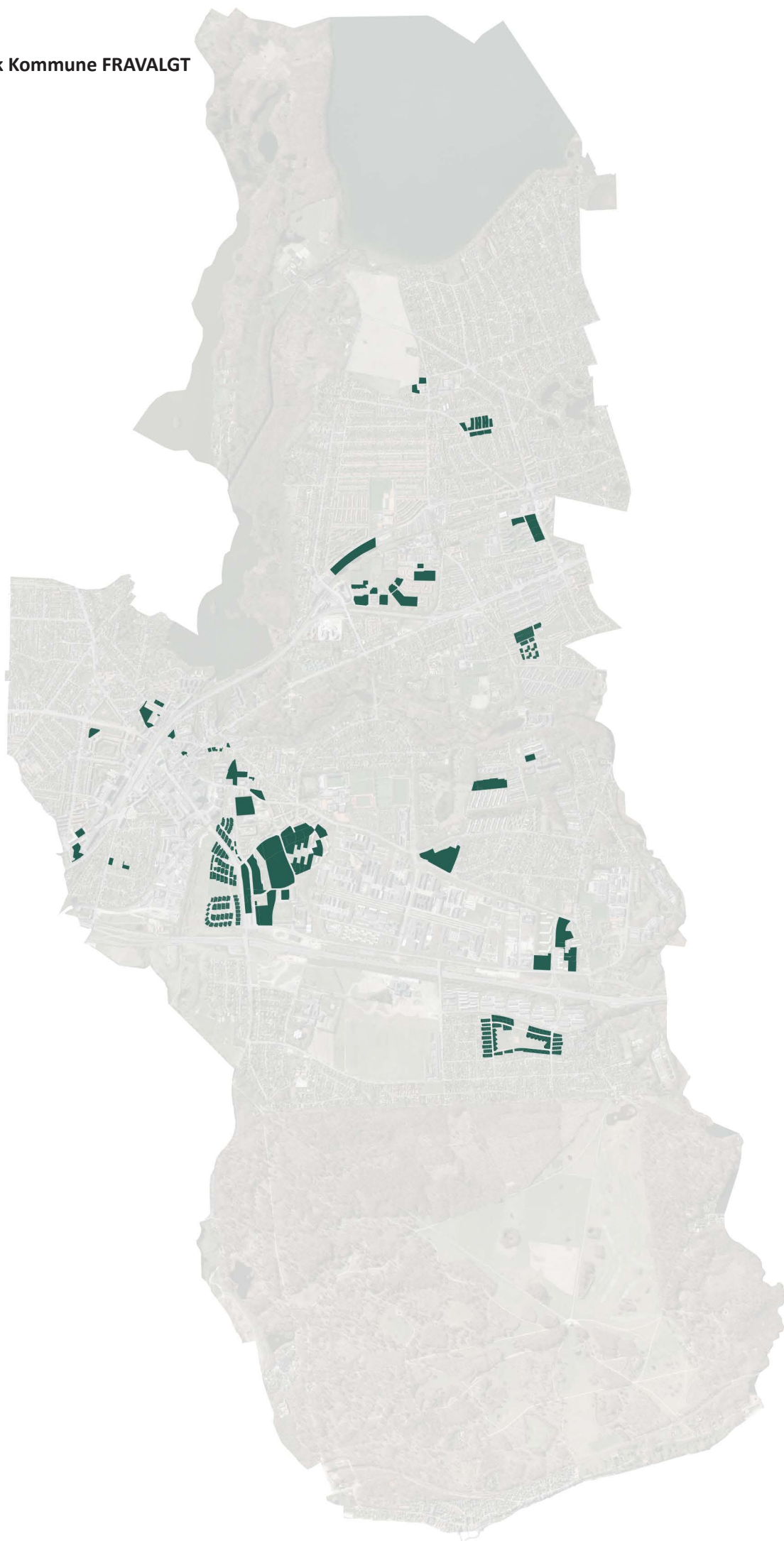
5.4.1. Lyngby-Taarbæk Kommune INFILL



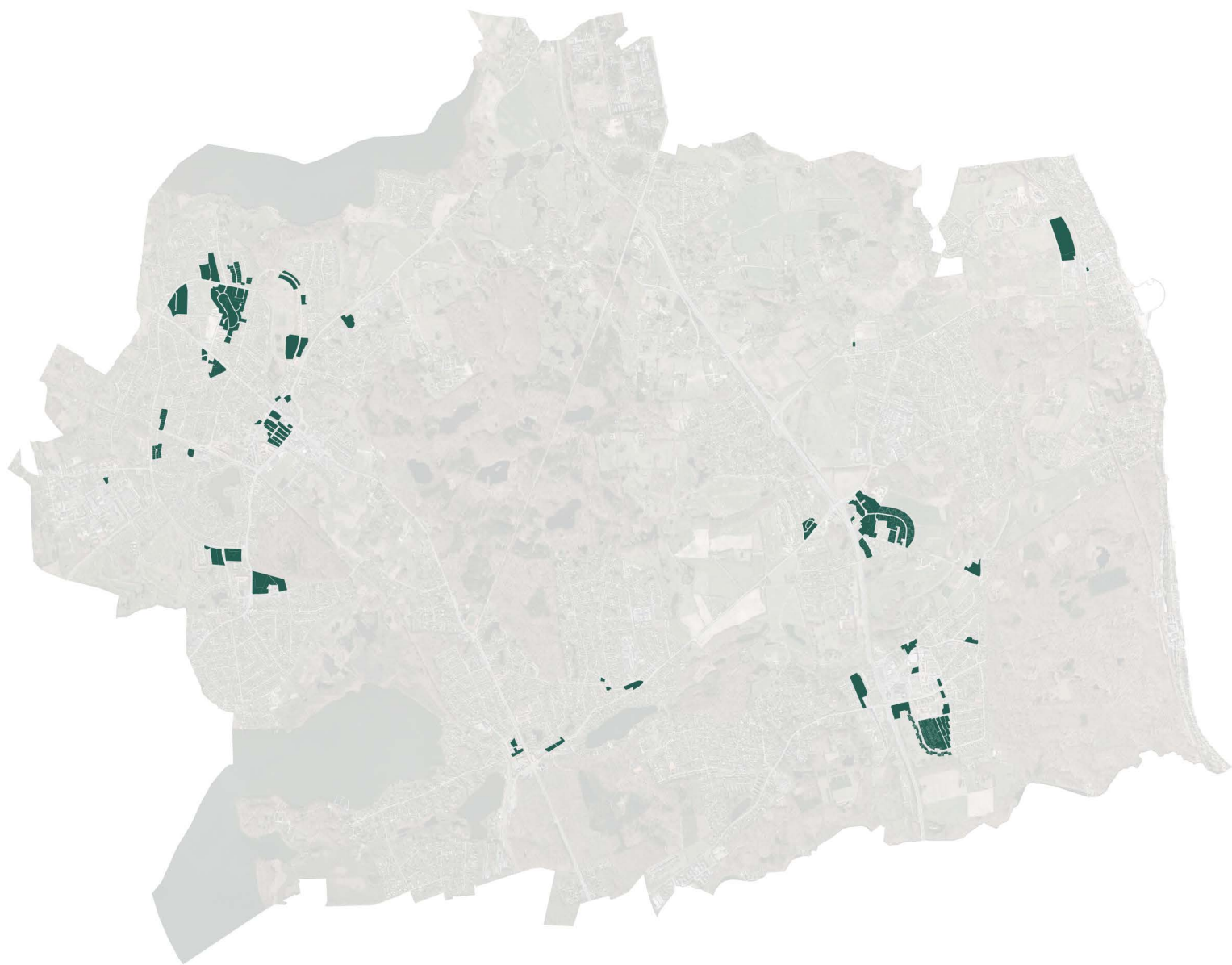
5.4.2. Lyngby-Taarbæk Kommune ONFILL



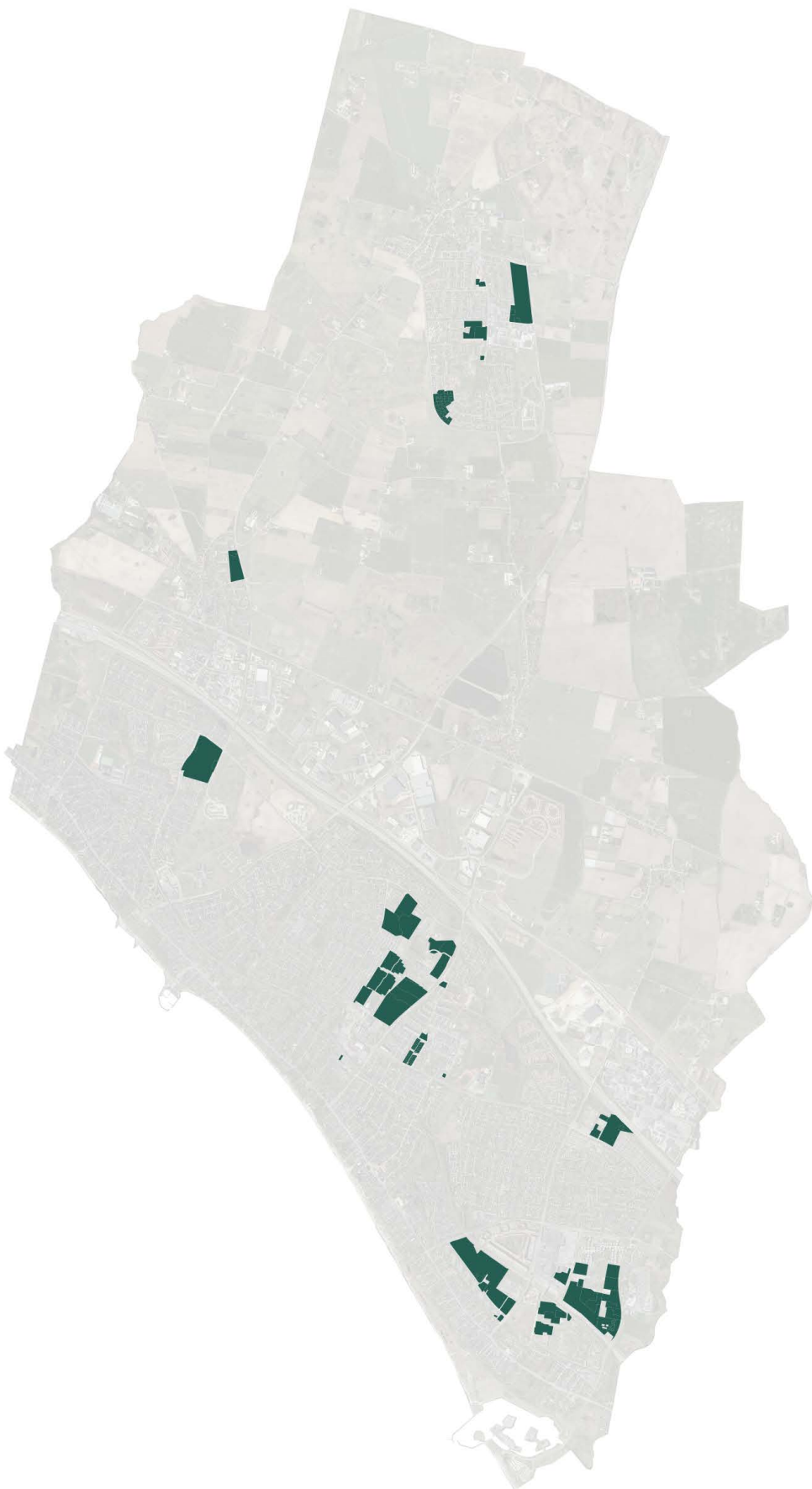
5.4.3. Lyngby-Taarbæk Kommune FRAVALGT



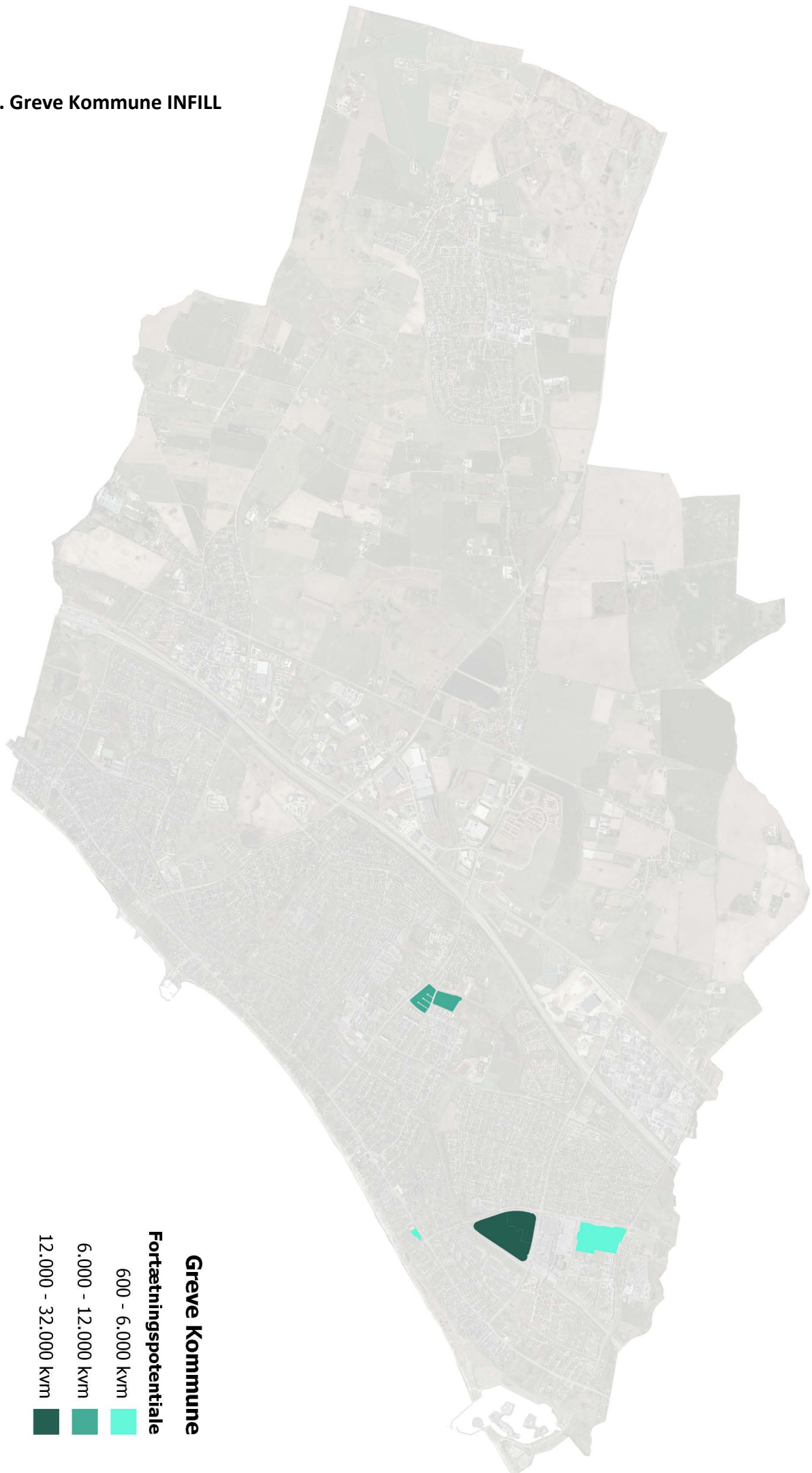
5.5.1. Rudersdal Kommune FRAVALGT



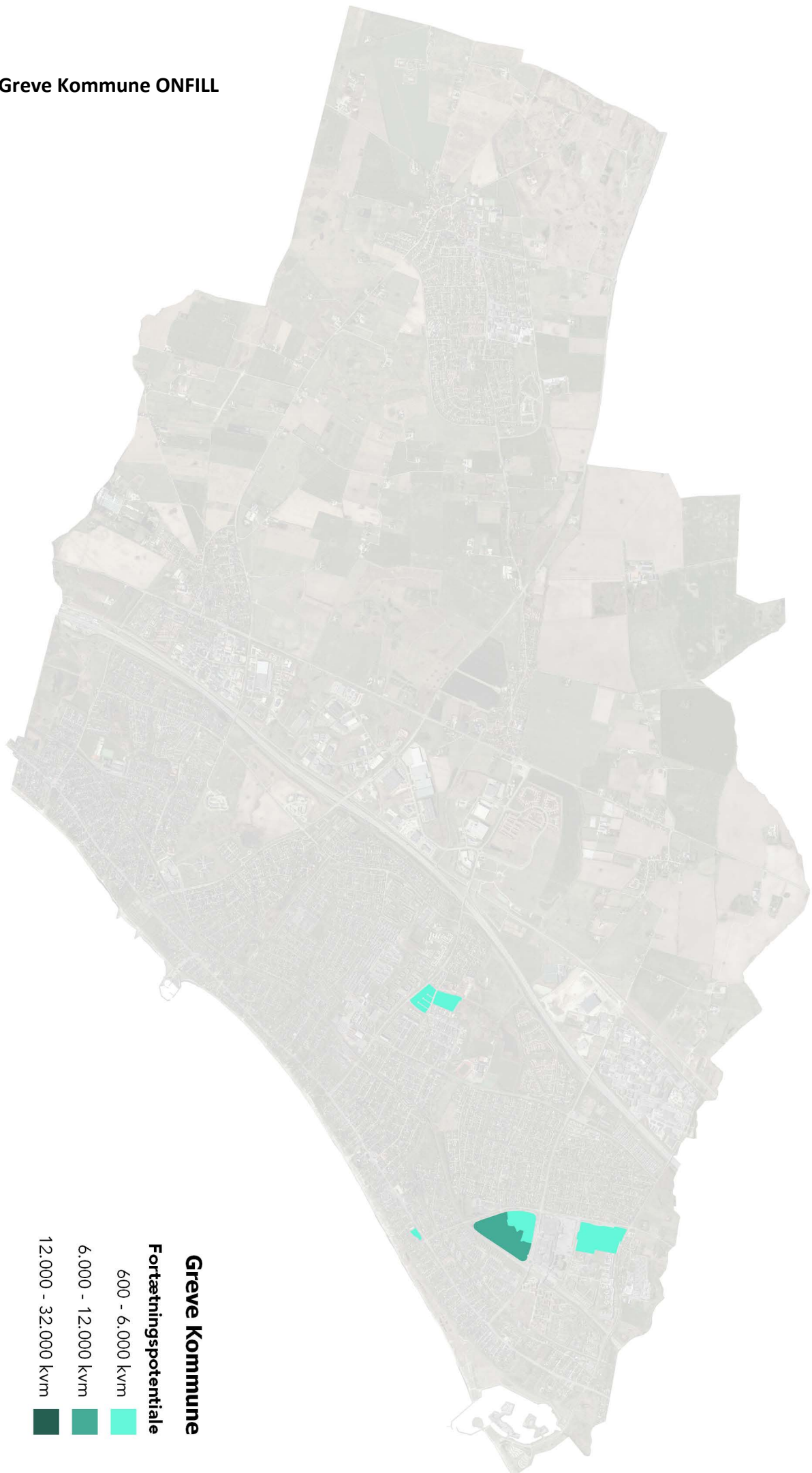
5.6.1. Greve Kommune FRAVALGT



5.6.2. Greve Kommune INFILL



5.6.3. Greve Kommune ONFILL

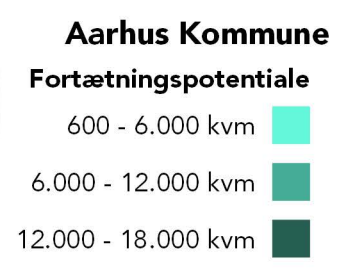
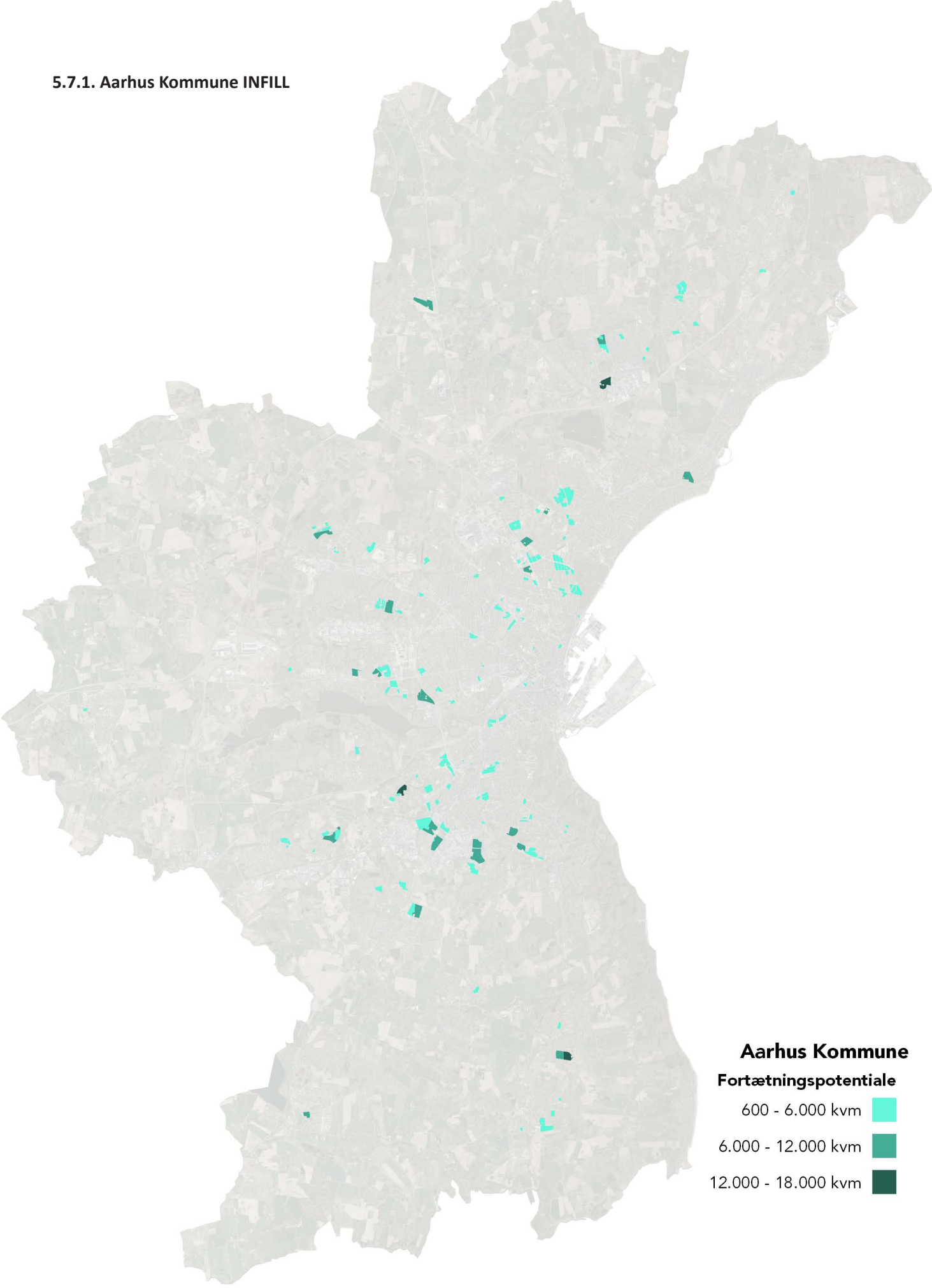


Greve Kommune

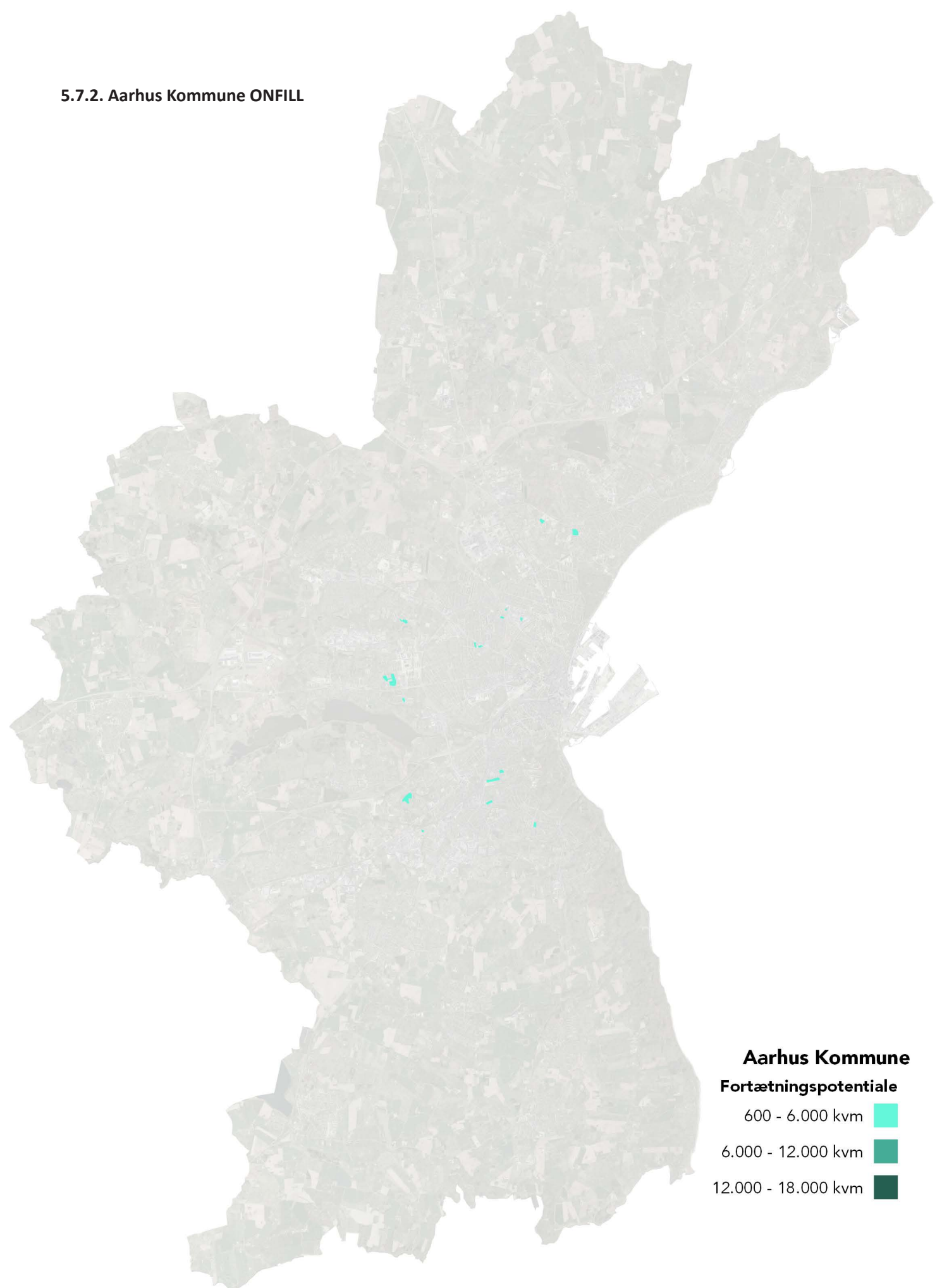
Fortætningspotentiale

- 600 - 6.000 kvm
- 6.000 - 12.000 kvm
- 12.000 - 32.000 kvm

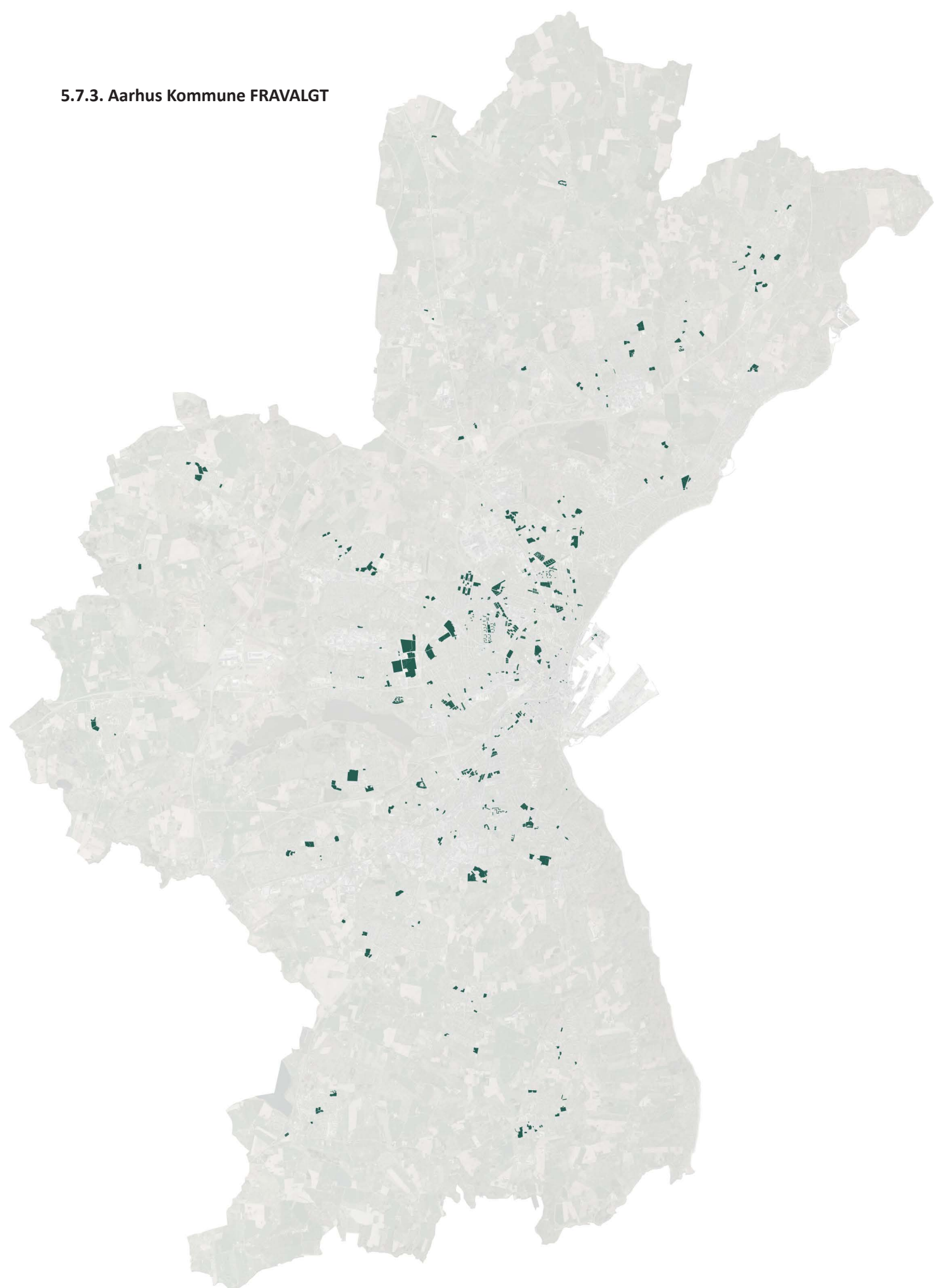
5.7.1. Aarhus Kommune INFILL



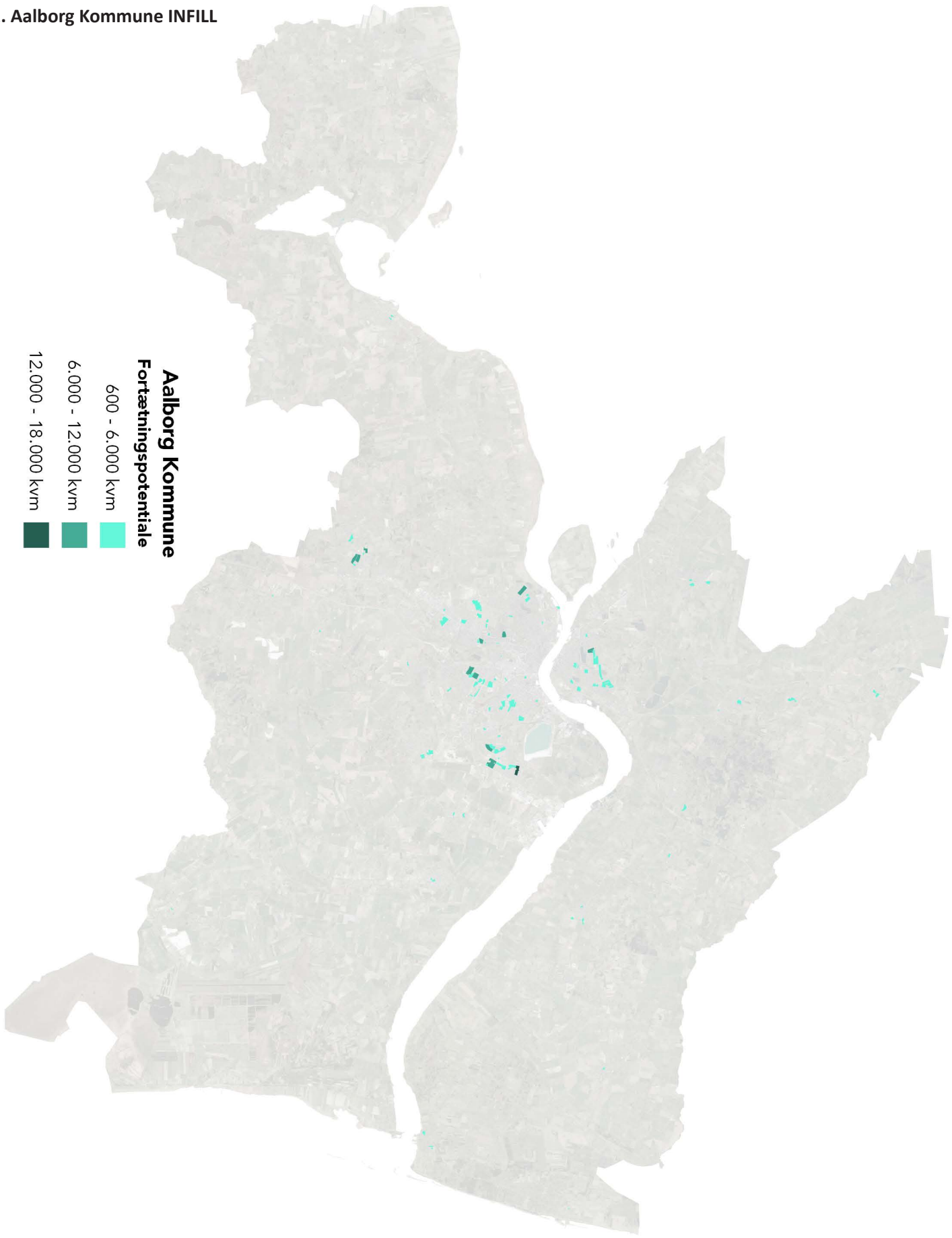
5.7.2. Aarhus Kommune ONFILL



5.7.3. Aarhus Kommune FRAVALGT



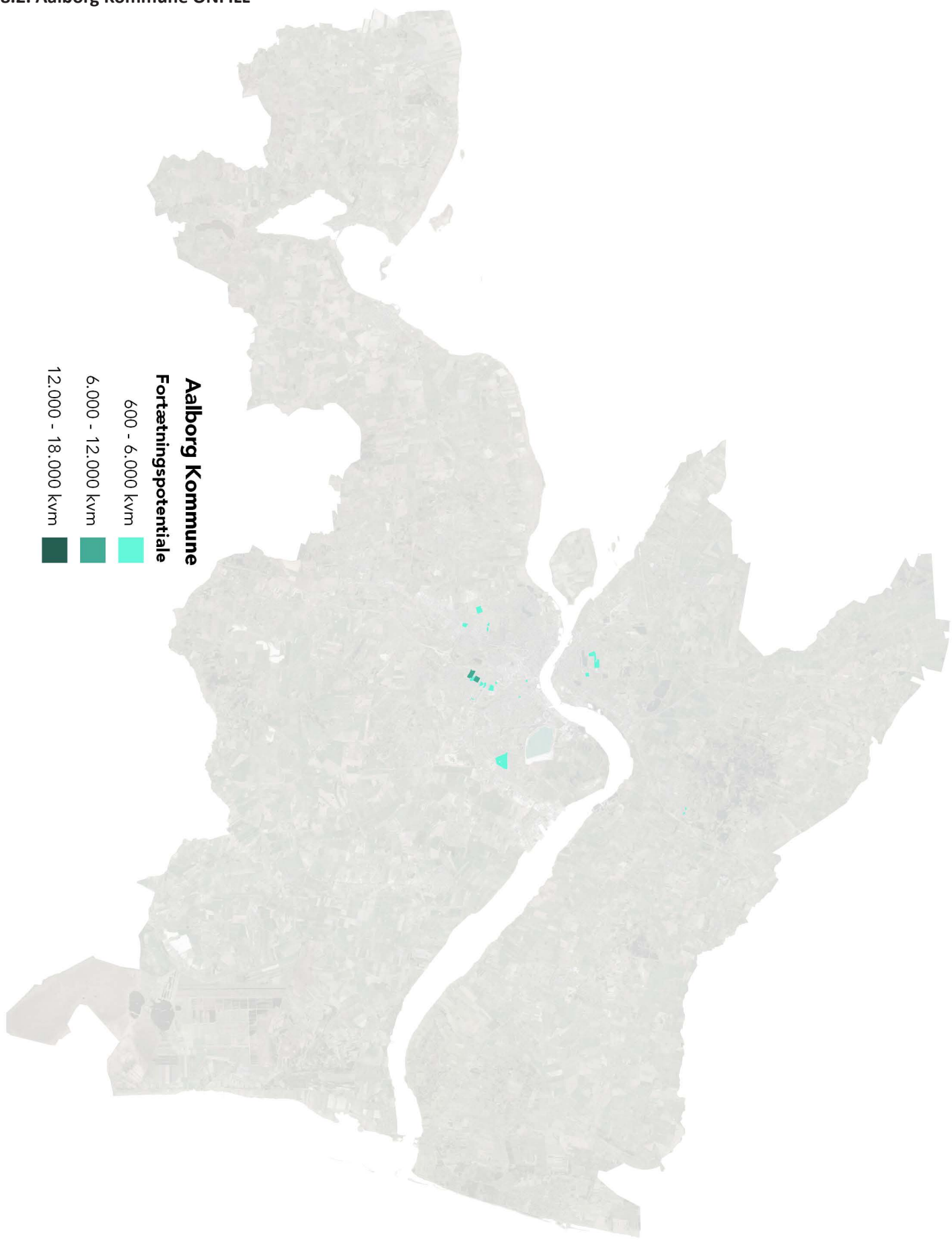
5.8.1. Aalborg Kommune INFILL



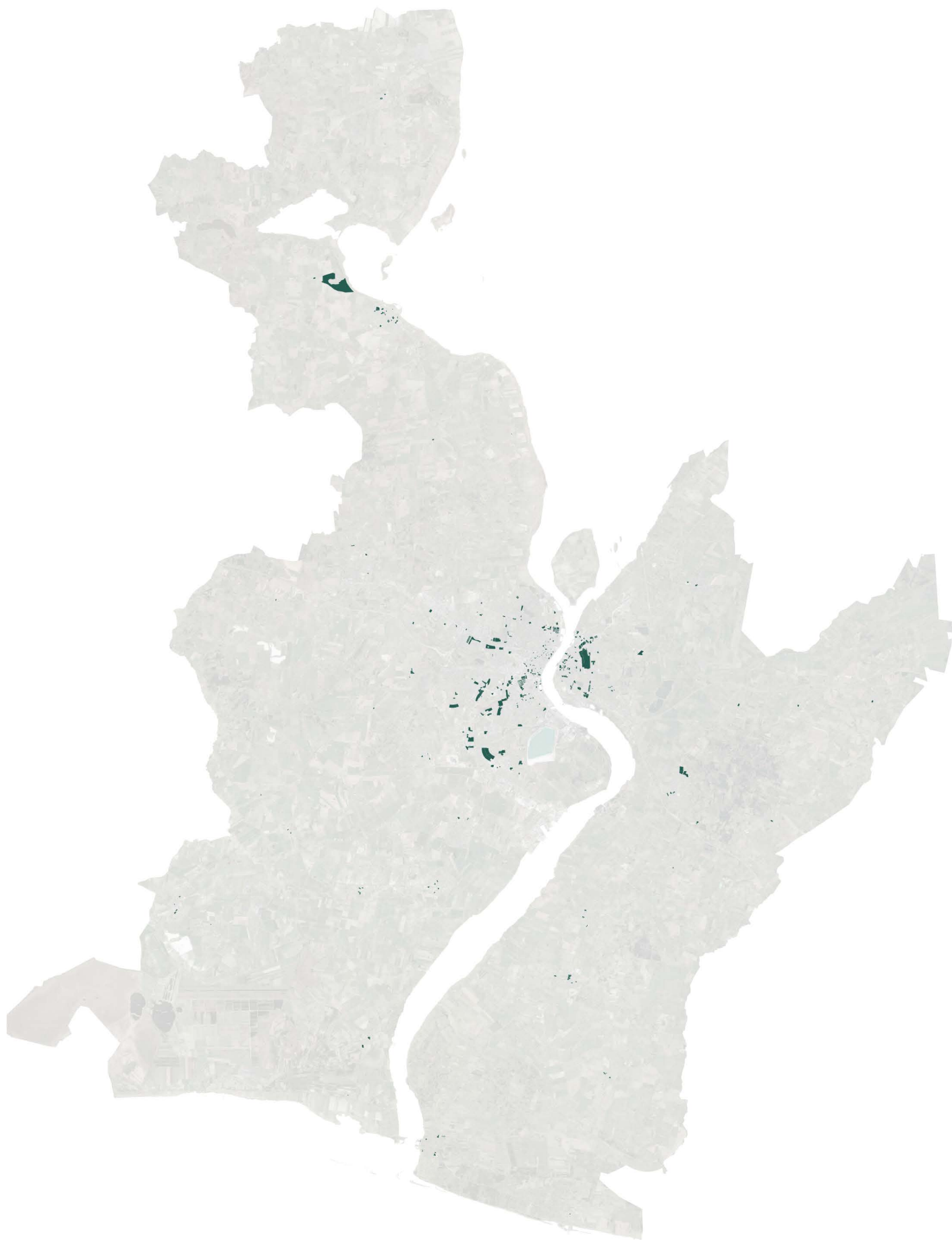
Aalborg Kommune
Fortætningspotentiale

- 600 - 6.000 kvm
- 6.000 - 12.000 kvm
- 12.000 - 18.000 kvm

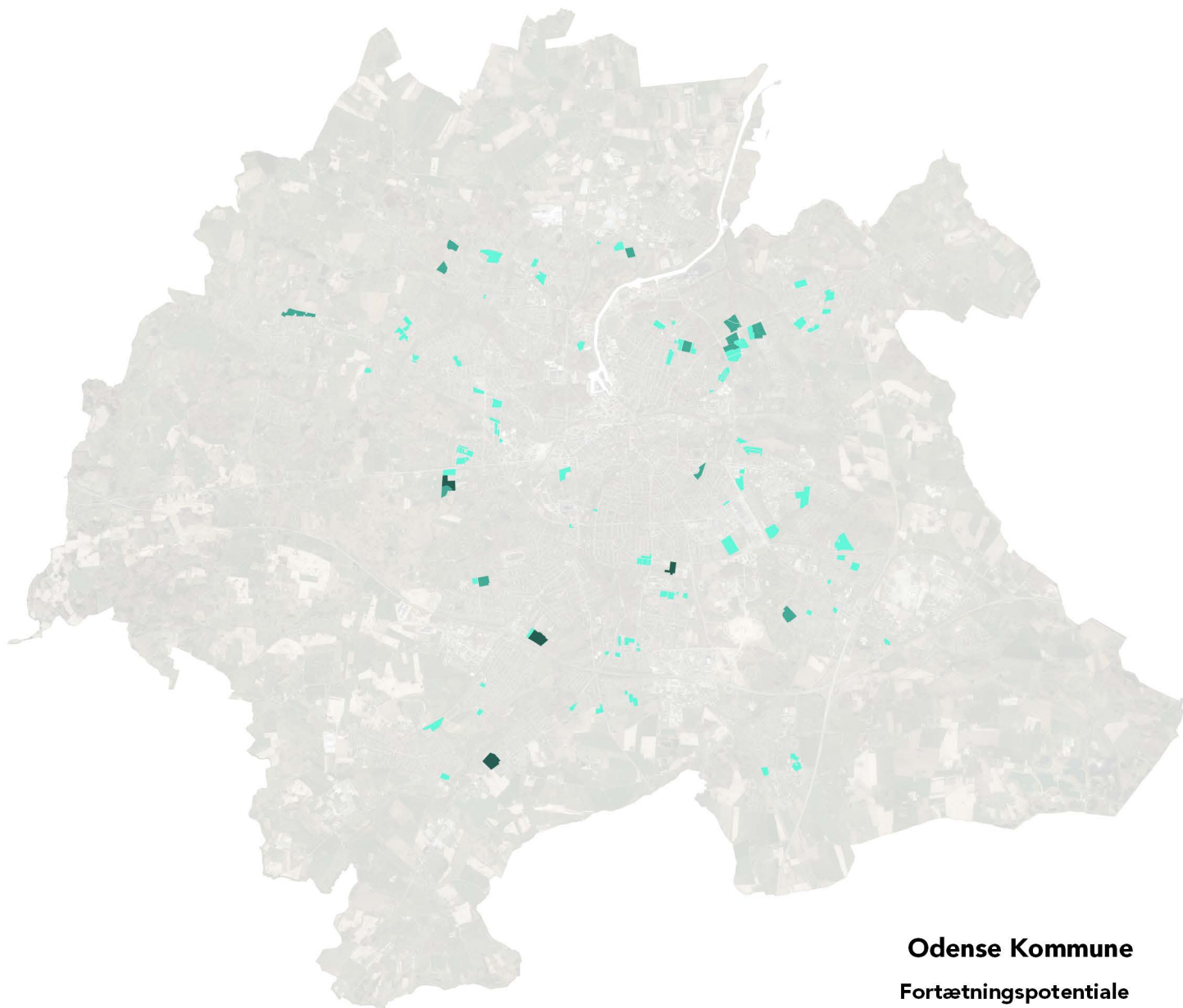
5.8.2. Aalborg Kommune ONFILL



5.8.3. Aalborg Kommune FRAVALGT



5.9.1. Odense Kommune INFILL

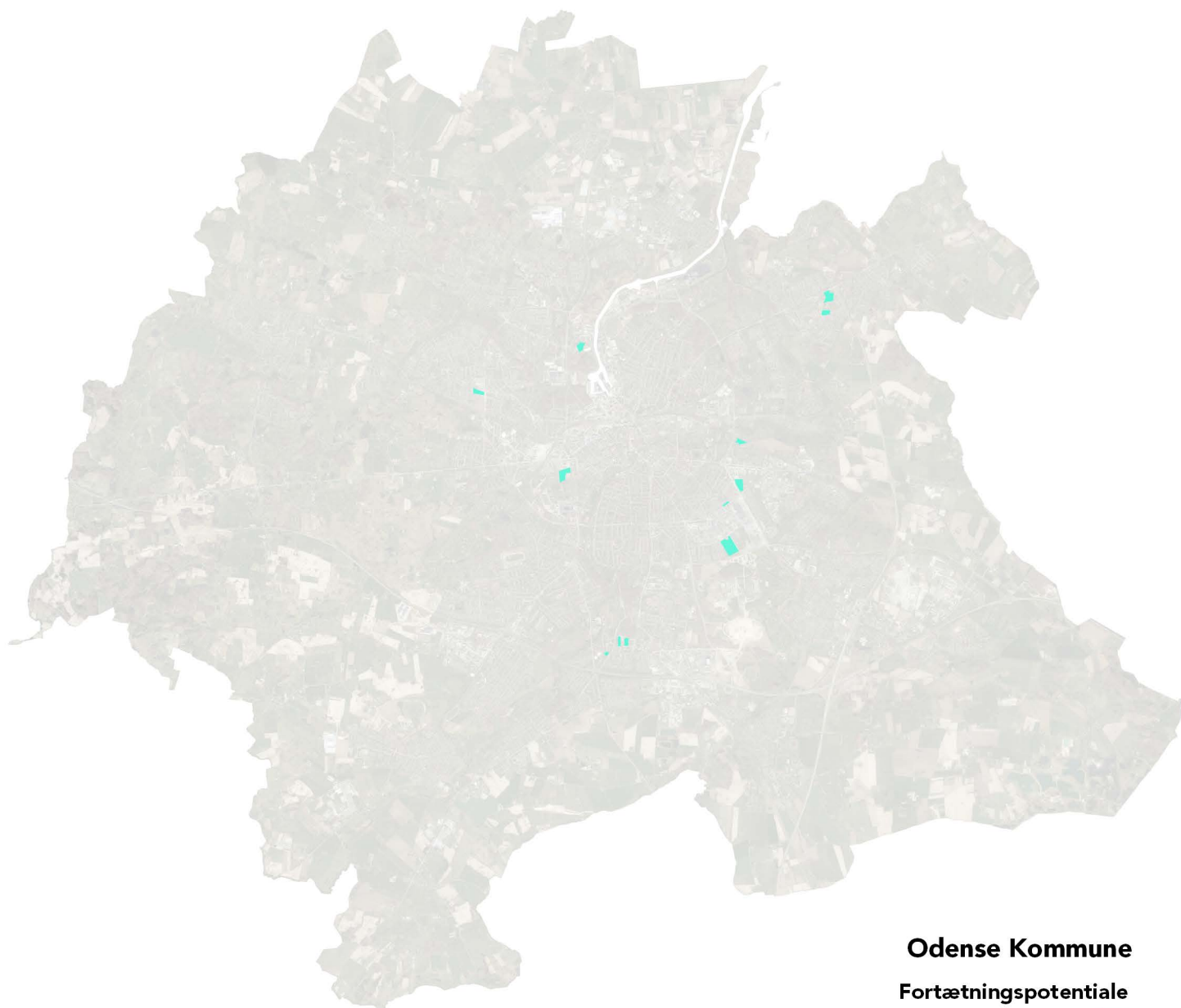


Odense Kommune

Fortætningspotentiale


- 600 - 6.000 kvm
- 6.000 - 12.000 kvm
- 12.000 - 18.000 kvm

5.9.2. Odense Kommune ONFILL



Odense Kommune

Fortætningspotentiale

- 600 - 6.000 kvm 
- 6.000 - 12.000 kvm 
- 12.000 - 18.000 kvm 

5.9.3. Odense Kommune FRAVALGT

